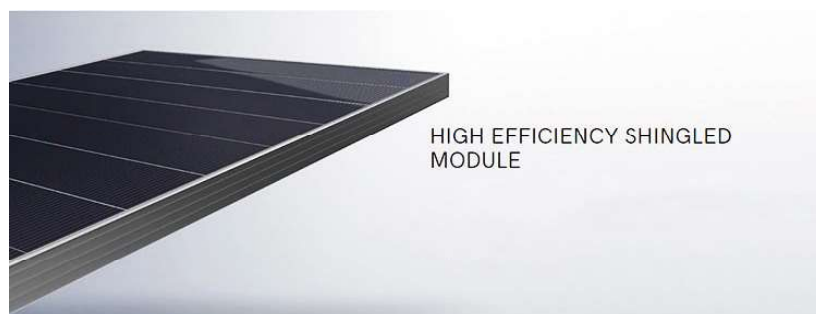
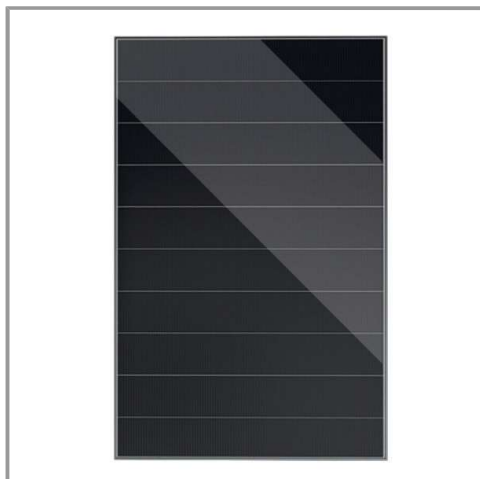


**TW 335Wp, Shingled,  
Monokristallijn, Percium, Silicium  
Cellen, Zwart Frame**  
TW-TH335PM5-60S



Elektrische gegevens (STC)	
Max. vermogen (W)	335
Max. spanning (VMP/V)	37.3
Max. stroom IMP (A)	8.98
Open klemspanning (V)	45.2
Kortsluitstroom (A)	9.49
Efficiëntie	19.3%
Max. spanning (V)	1000/1500 VDC
Bedrijfstemperatuur	-40°C to +85°C

NOCT	
Max. vermogen (W)	249
Max. spanning (VMP/V)	35.3
Max. stroom IMP (A)	7.07
Open klemspanning (V)	42.8
Kortsluitstroom (A)	7.66

Mechanische gegevens	
Frame	Zwart
Glasdikte (mm)	3.2
Aantal cellen	60 cells
Junctionbox IP-klasse	IP67

## Temperature

<b>Pmax temp. coefficient</b>	-0.4%/°C
<b>Voc temp. coefficient</b>	-0.3%/°C
<b>Isc temp. coefficient</b>	0.05%/°C

## Algemene gegevens

<b>Merk</b>	TW Solar
<b>Oorsprong</b>	China
<b>Aantal per pallet</b>	30
<b>Aantal per container</b>	840
<b>Productgarantie fabrikant</b>	12 jaar
<b>Vermogensgarantie fabrikant</b>	25 jaar
<b>Hoogte (mm)</b>	1622
<b>Breedte (mm)</b>	1068
<b>Diepte (mm)</b>	35
<b>Gewicht (kg)</b>	19.8

# TONGWEI MONO PERC TH330PM5 - 60S SHINGLED MODULE

## MECHANICAL CHARACTERISTICS

Dimensions	1622×1068×35 mm (L×W×H)
Weight	19.8kg
Front Glass	White toughened safety glass, 3.2mm
Encapsulation	EVA
Cells	6" PERC Mono-crystalline silicon solar cells (in increment of 5)
Back Sheet	co-extrusion backsheet
Frame	Anodized aluminum profile
Junction Box	Rated current:15A, IP67, TUV&UL
Cable	Length 1000mm, 1×4mm <sup>2</sup>
Connector	Compatible with MC4

## PACKING CONFIGURATION AND WARRANTY

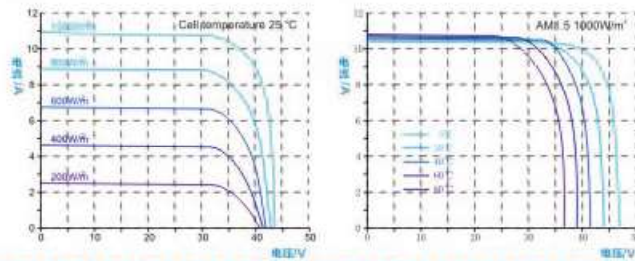
**Packaging** 30 pcs/pallet; 180 pcs/20' GP; 840 pcs/40' HQ

10 year product workmanship warranty

**Warranty**

25 year linear power warranty

## IV CURVE



## ELECTRICAL CHARACTERISTICS AT STANDARD TEST CONDITIONS(STC)

Module Type:TH 330 PM5-60S	340	335	330	325	320	315
Maximum Power-Pm [W]	340	335	330	325	320	315
Open Circuit Voltage-Voc [V]	45.2	45.2	45.1	45.1	45.0	44.9
Short Circuit Current-Isc [A]	9.51	9.49	9.45	9.42	9.39	9.36
Maximum Power Voltage-Vm [V]	37.4	37.3	37.2	37.1	37.0	36.9
Maximum Power Current-Im [A]	9.09	8.98	8.87	8.76	8.65	8.54
Module Efficiency-η [%]	19.6	19.3	19.0	18.8	18.5	18.2

## ELECTRICAL CHARACTERISTICS AT NMOT

Maximum Power-Pm [W]	253	249	246	242	238	235
Open Circuit Voltage-Voc [V]	42.8	42.8	42.7	42.7	42.6	42.5
Short Circuit Current-Isc [A]	7.67	7.66	7.63	7.60	7.58	7.55
Maximum Power Voltage-Vm [V]	35.4	35.3	35.2	35.1	35.0	34.9
Maximum Power Current-Im [A]	7.15	7.07	6.98	6.89	6.81	6.72

- Note:** 1. Standard Test Conditions [STC]: irradiance 1000 W/m<sup>2</sup>; AM 1.5; ambient temperature 25°C according to EN 60904-3;  
 2. Nominal Module Operating Temperature (NMOT): Irradiance 800W/ m<sup>2</sup>; wind speed 1m/s ; ambient temperature 20°C.  
 3. Tolerance of Pm: 0~+5%, Measuring uncertainty of power: ±3%. Performance deviation of Voc [V], Isc [A], Vm [V] and Im [A]: ±3%.

\* Declaration: With the technical progress and product updates, there exists a deviation between the technical parameter of the TW Solar's late products and the technical parameter in this specification. The TW Solar reserves the right to adjust the technical parameter at any time without notifying the customers. TW Solar has the ultimate power of interpretation to this technical specification.