

Data Logger Wifi Stick Quick User Guide

DLS Version: 2.1



Delivery Content

- 1 pc WiFi
- 1 pc WiFi external antenna
- 1 pc Data Logger Wifi Stick Quick User Guide

Introduction

Data Logger Wifi Stick is mainly used in inverters to realize simple and quick access to Internet. Users can easily check device information by logging in the monitoring center. The communication topology is as shown below:



Description of Symbols

To ensure normal use of the device, before using the device, be sure that:

- The connected wireless router can normally access to Internet;
- The communication address of the inverter MUST BE "01", which is default value.
- A WiFi-enabled mobile phone or a laptop computer are connected to this device for parameter setting.

1 Electrical Connection

Connect WiFi to the corresponding interface on the inverter. 5K-2G-US is used as an example in this manual. Please perform relevant operations as indicated below:



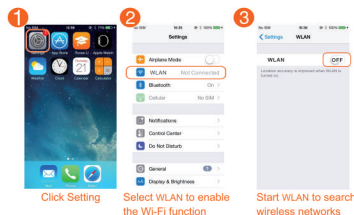
NOTES

The device must be kept away from large metal objects and electrical devices with strong magnetic fields, such as microwave oven, refrigerator, cordless phone, concrete wall, PV panel and metal wall, to ensure the communication quality. Communication quality may be affected in lightning storms.

2 Parameter Setting

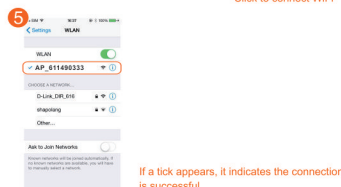
2.1 Setting up WiFi connection with iPhone

The WiFi Stick will perform self-check for 30 seconds after power-up. Wait for 30 seconds and then set up wireless network connection to WiFi via a smart phone, iPad or laptop computer with wireless network adapter or WiFi function. iPhone 5S mobile phone will be used as an example as follows.



NOTES

The network number is the serial number of the WiFi Stick. The serial number of WiFi Stick above is AP_611490333.

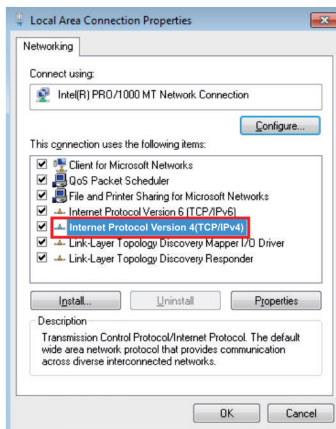


If a tick appears, it indicates the connection is successful

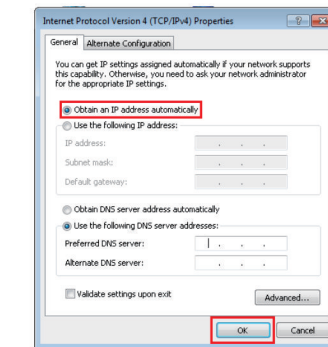
2.2 Connection via WiFi with PC

Notice: The setting hereinafter is operated with Windows 7 for reference only. If other operating systems are used, please follow the corresponding procedures.

- Prepare a computer or device, e.g. tablet PC and smartphone, that enables WiFi.
 - Obtain an IP address automatically
- ① Open **Wireless Network Connection Properties**, double click **Internet Protocol Version 4(TCP/IPv4)**.

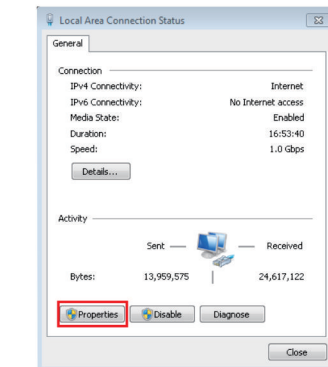


- ② Select **Obtain an IP address automatically**, and click **OK**.



3. Set WiFi connection to the data logger

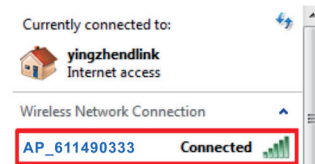
- ① Open wireless network connection and click **Properties**.



- ② Select wireless network of the data logging module, no passwords required as default. The network name consists of **AP** and the **serial number of the product**. Then click **Connect**.



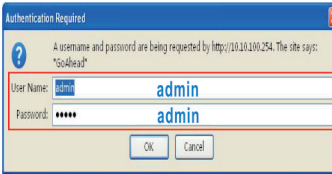
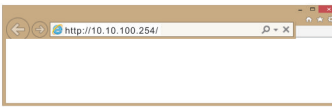
- ③ Connection successful.



2.3 Set parameters of data logger

(a) Open a web browser, and enter **10.10.100.254**, then fill in username and password, both of which are **admin** as default.

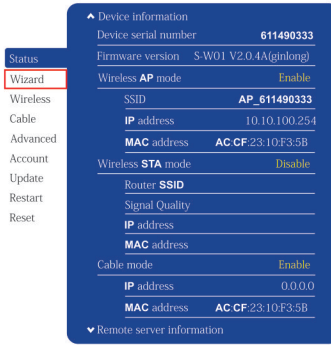
Supported browsers: Internet Explorer 8+, Google Chrome 15+, Firefox 10+



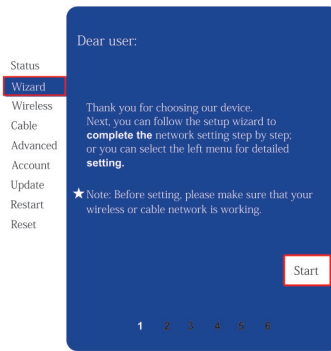
(b) In the configuration interface of data logger, you can view general information of the data logger.

Follow the setup wizard to start quick setting.

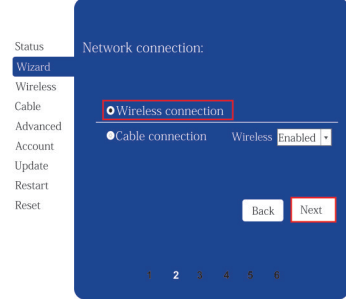
① Click **Wizard** to start.



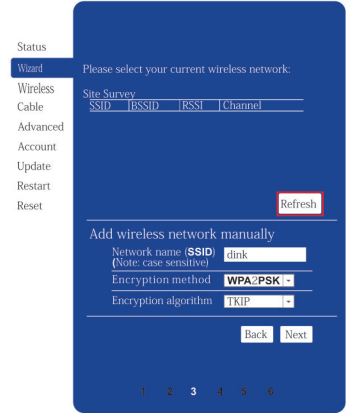
② Click **Start** to continue.



③ Select **Wireless connection**, and click **Next**.

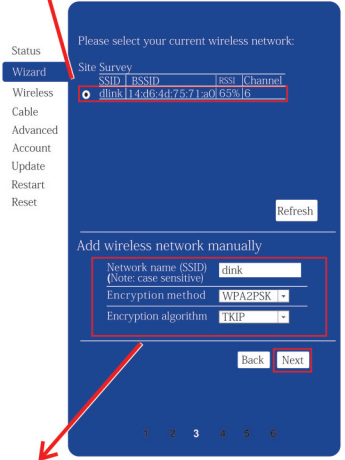


④ Click **Refresh** to search available wireless networks, or add it manually.



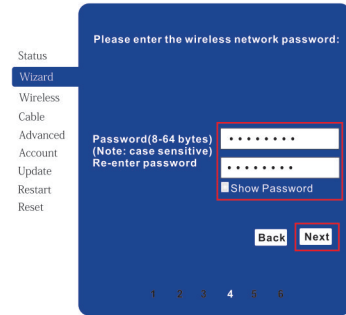
⑤ Select the wireless network you need to connect, then click **Next**.

Notice: If the signal strength (RSSI) of the selected network is <30%, which means unstable connection, please adjust the antenna of the router, or use a repeater to enhance the signal.

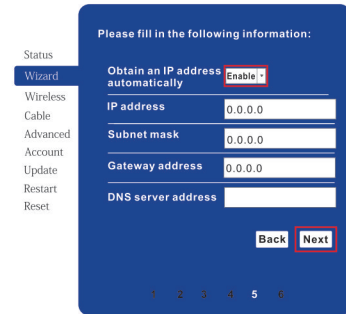


Notice: Don't modify the information inside the red circle, and directly click "Next".

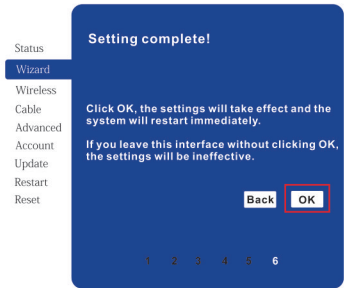
⑥ Enter the password for the selected network, then click **Next**.



⑦ Select **Enable** to obtain an IP address automatically, then click **Next**.



⑧ If setting is successful, the following page will display. Click **OK** to restart.



⑨ If restart is successful, the following page will display.

