

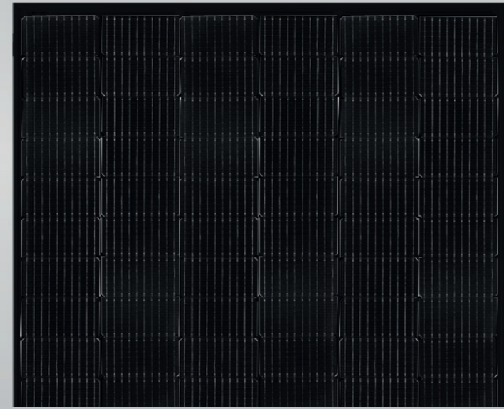
# Tiger All Black Mono-facial 340-360 Watt

Tiling Ribbon (TR) Technology

Positive power tolerance of 0~+3%

ISO9001:2015, ISO14001:2015, ISO45001:2018 certified factory

IEC61215, IEC61730 certified product



## KEY FEATURES



### TR technology + Half Cell

TR technology with Half cell aims to eliminate the cell gap to increase module efficiency (mono-facial up to 20.68%)



### 9BB instead of 5BB

9BB technology decreases the distance between bus bars and finger grid line which is benefit to power increase.



### Higher lifetime Power Yield

2% first year degradation, 0.55% linear degradation



### Best Warranty

12 year product warranty, 25 year linear power warranty



### Avoid debris, cracks and broken gate risk effectively

9BB technology using circular ribbon that could avoid debris, cracks and broken gate risk effectively

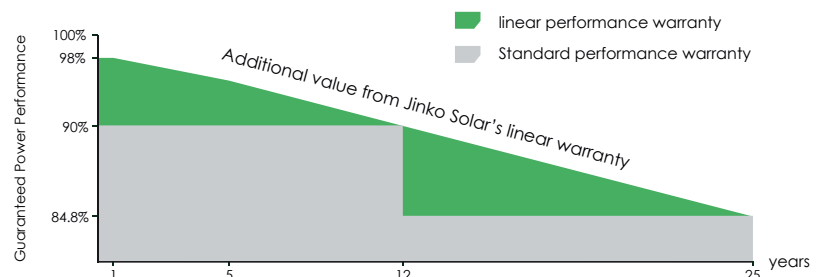


### Severe Weather Resilience

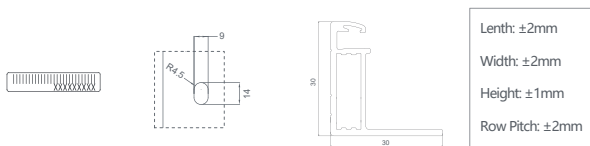
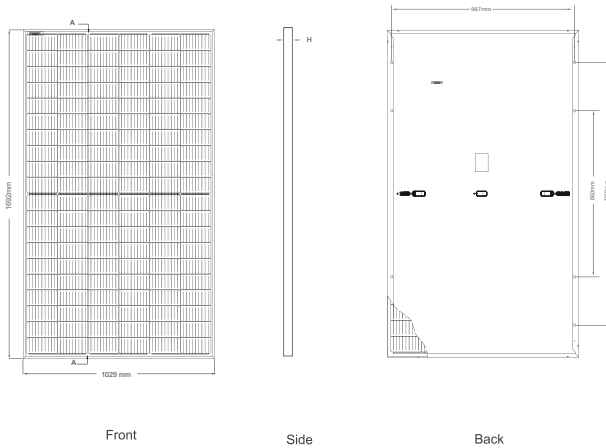
Certified to withstand: wind load (2400 Pascal) and snow load (5400 Pascal).

## LINEAR PERFORMANCE WARRANTY

12 Year Product Warranty 25 Year Linear Power Warranty  
0.55% Annual Degradation Over 25 years



## Engineering Drawings

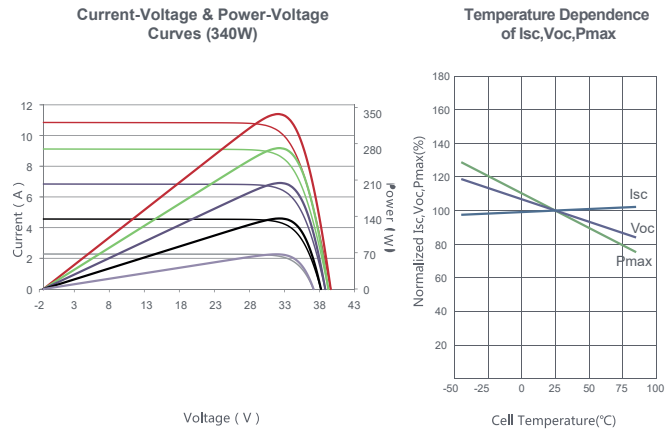


## Packaging Configuration

( Two pallets = One stack )

35pcs/pallets, 70pcs/stack, 910pcs/ 40'HQ Container

## Electrical Performance & Temperature Dependence



## Mechanical Characteristics

Cell Type	P type Mono-crystalline
No. of cells	120 (2×60)
Dimensions	1692×1029×30mm (66.61×40.51×1.18 inch)
Weight	19.3 kg (42.55 lbs)
Front Glass	3.2mm, Anti-Reflection Coating, High Transmission, Low Iron, Tempered Glass
Frame	Anodized Aluminium Alloy
Junction Box	IP67 Rated
Output Cables	TUV 1×4.0mm <sup>2</sup> (+): 290mm, (-): 145 mm or Customized Length

## SPECIFICATIONS

Module Type	JKM340M-6TL3-B		JKM345M-6TL3-B		JKM350M-6TL3-B		JKM355M-6TL3-B		JKM360M-6TL3-B	
	STC	NOCT	STC	NOCT	STC	NOCT	STC	NOCT	STC	NOCT
Maximum Power (Pmax)	340Wp	253Wp	345Wp	257Wp	350Wp	260Wp	355Wp	264Wp	360Wp	268Wp
Maximum Power Voltage (Vmp)	33.40V	30.70V	33.50V	30.81V	33.66V	30.93V	33.81V	31.04V	33.97V	31.16V
Maximum Power Current (Imp)	10.18A	8.24A	10.30A	8.33A	10.40A	8.41A	10.50A	8.49A	10.60A	8.57A
Open-circuit Voltage (Voc)	40.00V	37.75V	40.10V	37.85V	40.26V	38.00V	40.41V	38.14V	40.57V	38.29V
Short-circuit Current (Isc)	10.89A	8.80A	11.01A	8.89A	11.11A	8.97A	11.21A	9.05A	11.31A	9.13A
Module Efficiency STC (%)	19.53%		19.82%		20.10%		20.39%		20.68%	
Operating Temperature(°C)	-40°C~+85°C									
Maximum system voltage	1000VDC (IEC)									
Maximum series fuse rating	20A									
Power tolerance	0~+3%									
Temperature coefficients of Pmax	-0.35%/°C									
Temperature coefficients of Voc	-0.28%/°C									
Temperature coefficients of Isc	0.048%/°C									
Nominal operating cell temperature (NOCT)	45±2°C									

\* STC: Irradiance 1000W/m<sup>2</sup> Cell Temperature 25°C

AM=1.5

NOCT: Irradiance 800W/m<sup>2</sup> Ambient Temperature 20°C

AM=1.5

Wind Speed 1m/s

\* Power measurement tolerance: ± 3%