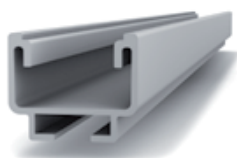


MOUNTING RAILS



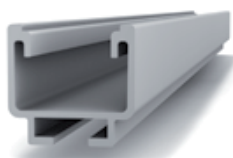
K2 SolidRail UltraLight 32



Article number				
P1001929	Length 6,10 m			

Aluminum mounting rail with static confirmation for low snow zones and short spans. The rail span width amounts to 130 cm at K2 standard conditions.
Material: Aluminium EN AW-6063 T66

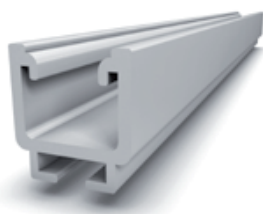
K2 SolidRail Light 37



Article number				
P1004367	Length 2,10 m			
P1000006	Length 3,43 m			
P1000009	Length 4,35 m			
P1000012	Length 5,40 m			
P1000014	Length 6,10 m			

Quick mounting rail with static confirmation for medium snow zones and long spans. The rail span width amounts to 145 cm at K2 standard conditions.
Material: Aluminium EN AW-6063 T66

K2 SolidRail Medium 42



Article number				
P1004368	Length 2,10 m			
P1000016	Length 3,43 m			
P1000019	Length 4,35 m			
P1000022	Length 5,40 m			
P1000024	Length 6,10 m			

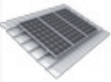
Quick mounting rail with static confirmation for medium snow zones and medium spans. The rail span width amounts to 130 cm at K2 standard conditions.
Material: Aluminium EN AW-6063 T66

K2 SolidRail Alpin 60



Article number				
P1000028	Length 6,10 m			

Quick mounting rail with static confirmation for high snow zones and long spans. The rail span width amounts to 260 cm at K2 standard conditions.
Material: Aluminium EN AW-6063 T66



Pitched Roof Systems



Flat Roof Systems



Supplementary Systems



Ground Mounted Systems



Mounting Rails



Roof Attachments



Mounting module



Screws & Nuts

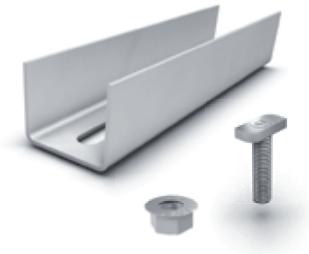


Accessories



System components

K2 Set Rail connector



Article number				
P1004107	For K2 SolidRail UltraLight or Light, Length 200 mm			
P1004109	For K2 SolidRail Medium or Alpin, Length 200 mm			

Aluminum rail connector for K2 SolidRail UltraLight, Light, Medium or Alpin rails.
The set consists of:

- 1 Rail connector, Aluminium
- 2 T-Bolts (P1000041), Stainless steel
- 2 Locking nut M10 (P1000042), Stainless steel

K2 EndCap Light



Article number				
P1004765				

K2 End Cap for K2 SolidRail Light
Material: glass fibre reinforced polyamid

K2 EndCap Medium



Article number				
P1004766				

K2 End Cap for K2 SolidRail Medium
Material: glass fibre reinforced polyamid

K2 EndCap Alpin



Article number				
P1005053				

K2 End Cap for K2 SolidRail Alpin
Material: glass fibre reinforced polyamid

MOUNTING RAILS

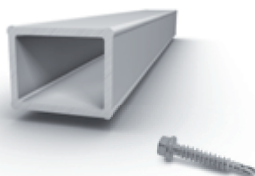
K2 SolidRail LS 85



Article number				
P1001785	Length 6,00 m			

Quick mounting rail with static confirmation. Without side connection, with extra large cable duct. The rail span width amounts to 450 cm at K2 standard conditions.
Material: Aluminium EN AW-6063 T66

K2 Set Rail connector SolidRail LS



Article number				
P1004098	Length 3,95 mm			

Aluminum rail connector as connecting element between two K2 SolidRail LS.

The set consists of:

- 1 Rail connector SolidRail LS (P1001947)
- 4 Dimension screws 5.5x25 mm (P1001051), Stainless steel

K2 SolidRail L 85

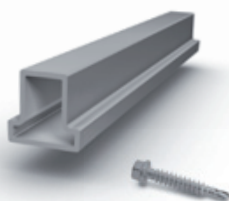


Article number				
P1001226	Length 6,00 m			

Quick mounting rail with static confirmation. With side connection. The rail span width amounts to 450 cm at K2 standard conditions.

Material: Aluminium EN AW-6063 T66

K2 Set Rail connector SolidRail L

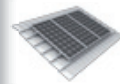


Article number				
P1004105	Length 395 mm			

Aluminum rail connector as connecting element between two K2 SolidRail L.

The set consists of:

- 1 Rail connector SolidRail LS (P1001230)
- 4 Dimension screws 5,5x25 mm (P1001051), Stainless steel



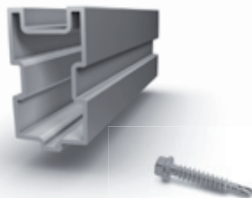
K2 SolidRail XL 140



Article number				
P1000983	Length 6,00 m			

Quick mounting rail with static confirmation. With side connection.
The rail span width amounts to 690 cm at K2 standard conditions.
Material: Aluminium EN AW-6063 T66

K2 Set Rail connector SolidRail XL

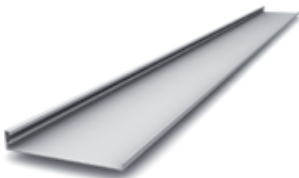


Article number				
P1004106	Length 395 mm			

Aluminum rail connector as connecting element between two K2 SolidRail XL.
The set consists of:

- 1 Rail connector SolidRail XL (P1001049)
- 4 selbstbohrende Sechskantblechschrauben 5,5x25 mm (P1001051), Stainless steel

K2 LevelRail 22



Article number				
P1003402	Length 5,00 m			

Quick mounting rail for mounting the K2 D-Level and S-Level system on flat roofs with low load bearing capacity. The extrawide base of the rail provides an additional brought bearing area if required.
Material: Aluminium EN AW-6063 T66

K2 Set Rail connector LevelRail



Article number				
P1004116	Length 200 mm			

Aluminium rail connector as connecting element between two K2 LevelRails.
The set consists of:

- 1 Rail connector (P1003845), Aluminium
- 2 T-Bolts M8 x 20 (P1002387), Stainless steel
- 2 Locking nut M8 (P1000043), Stainless steel