

K2 SpeedLock Set

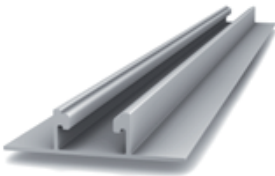


Article number				
P1003558	for SpeedRail 22			
P1003560	for SpeedRail 36			

“SpeedLock” mounting security for fusing the K2 SpeedRail in case of thermal expansion. The set consists of:

- 1 SpeedLock, Aluminium
- 1 DIN 7991 hexagon socket countersunk head screw M8 x 20, stainless steel
- 1 M K2 slot nut with clip, Stainless steel, plastic

K2 Flat Rail 22

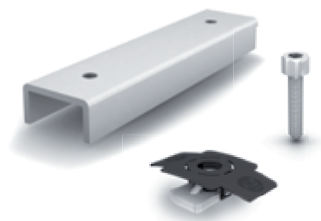


Article number				
P1000169	Length 6,10 m			

Quick mounting rail for direct mounting with sheet metal screws or rivets, or with extra load bearing area for non-penetrating flat roof installation and metal sheeted roofs. The rail span width amounts to 110 cm at K2 standard conditions.

Material: Aluminium EN AW-6063 T66

K2 FlatConnector Set



Article number				
P1006039	Length 200 mm			

Rail connector for connecting 2 K2 SpeedRails or Flat Rail. With 2 drill holes for flexible mounting.

The set consists of:

- 1 FlatConnector, Aluminium
- 2 Allen bolt M8 x 20, Stainless steel
- 2 Washer M8
- 2 M k2 slot nut with clip, Stainless steel